



HRC Fuses

Fuse Links for Distribution Protection



Construction :

HRC Fuses consist of a ceramic body with a Silver fuse filament (based on Ampere rating) and a striker pin mechanism. In case of any fault, the striker pin comes out with pre defined force. (This striker pin further can be used to trip equipment it has to protect.) The HRC Fuses are available in both DIN as well as BS type.

HRC fuses provide a faster option for tripping as against relay based protection. Our HRC fuses can provide accurate protection for transformers and capacitors against Short Circuits / over Current.

Description :

PCE Systems HRC Fuses are designed to meet the stringent requirements necessary for Medium Voltage Distribution System Protection. PCE Systems HRC Fuses are suitable for both Cable as well as Transformer Protection. They provide reliable short circuit protection in 11/22/33kV Distribution Systems.

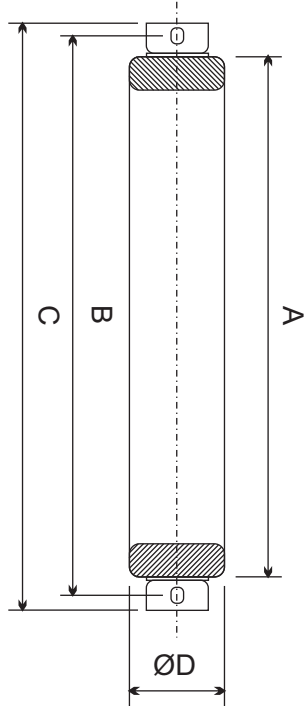
- **Relevant Standard : IEC 60282-1**
- **Ratings :**
- **Voltage : 11 kV / 22 kV / 33 kV**
- **Current Rating : 10 Amps. - 100 Amps.**
- **Breaking Capacity : 50 kA**



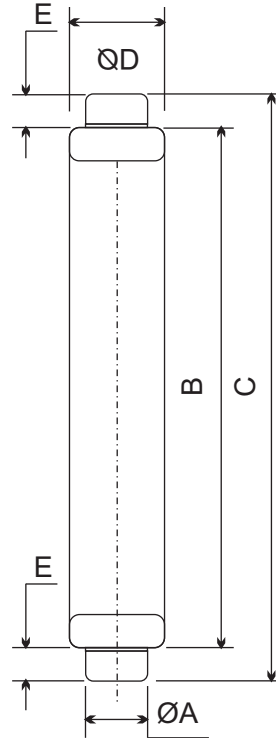
HRC Fuses

Fuse Links for Distribution Protection

Dimensional Details



BS TYPE HRC FUSE



DIN TYPE HRC FUSE

BS Fuse Dimensions

Sr.No.	11 kV	22 kV	33 kV
A	360 mm	510 mm	610 mm
B	410 mm	565 mm	660 mm
C	440 mm	595 mm	690 mm
ØD	64 mm	64 mm	64 mm

DIN Fuse Dimensions

Sr.No.	11 kV	22kV	33kV
ØA	45 mm	45 mm	45 mm
B	292 mm	442 mm	537 mm
C	360 mm	510 mm	605 mm
ØD*	51/76 mm	51/76 mm	51/76 mm
E	34 mm	34 mm	34 mm

* Diameter – 51 mm for rating upto 40 Amps. & 76 mm for rating 40 Amps. to 100 Amps.

Technical specifications may change due to constant improvements.



Power Control Electro Systems Pvt.Ltd.

E-32, M.I.D.C., Kupwad, Sangli, Maharashtra, Pin - 416436.
 Ph.: ++91 233 2645630, 2645640. Fax : ++91 233 2645640
 Email : sales@pcesystems.in
 Web.: www.pcesystems.in